

JOB NAME. SLUICE GATE		PAGE No.
SECTION. INSTALLATION		7 of 7
JOB No.	DESIGNED.	
DATE.	CHECKED.	

INSTALLATION (SEE P1)

1. THE MOUNTING FRAME WITH HYDR. CYL. AND SLUICE PLATE (SHOP ASSEMBLED) IS BOLTED TO THE FACE OF THE FLANGED SLUICE PIPE - 6 M12 BOLTS.
BEFORE DOING SO ADJUST THE TWO ADJUSTER BOLTS SO THAT THE SLUICE PLATE IS TILTED OUT A LITTLE TO ALLOW THE FRAME NO HINDRANCE WHEN BOLTING UP.
2. NEXT STEP IS TO RE-ADJUST THE ADJUSTER BOLTS SO THAT THE SLUICE PLATE IS PRESSED HARD AGAINST THE SEAL
3. THE CYLINDER MOUNT CAN NOW BE LOCKED UP - CHECK THAT CYL. IS AT FULL STROKE - THIS IS IMPORTANT AS THE COMPRESSION STRUT IN ITS OUT OF COLUMN POSITION IS HELD, BUT NOT LOADED BY THE CYL.
4. FURTHER TIGHTENING OF THE ADJUSTER BOLTS (TO IMPROVE SLUICE PL. SEAL) WILL ALSO REQUIRE ADJUSTMENT TO THE CYL. MOUNT. WITH THE CYL. AT FULL STROKE SLACKENING AND THEN RE-TIGHTENING THE TWO NUTS WILL ACHIEVE OUTCOME AS EXPLAINED IN (3) ABOVE.
5. IF THE CYLINDER AFTER A PERIOD OF SERVICE NEEDS TO COME OUT FOR REPLACEMENT OR SERVICING THE SLUICE PLATE CAN BE BOLTED IN POSN. USING 4 - M16 x 90 BOLTS. THE CYL. CAN THEN ^{BE} DETACHED FROM THE COMPRESSION STRUT ASSY.

JOB NAME. SLUICE GATE

PAGE No.

SECTION. GENERAL ARRGT.

1 OF 7

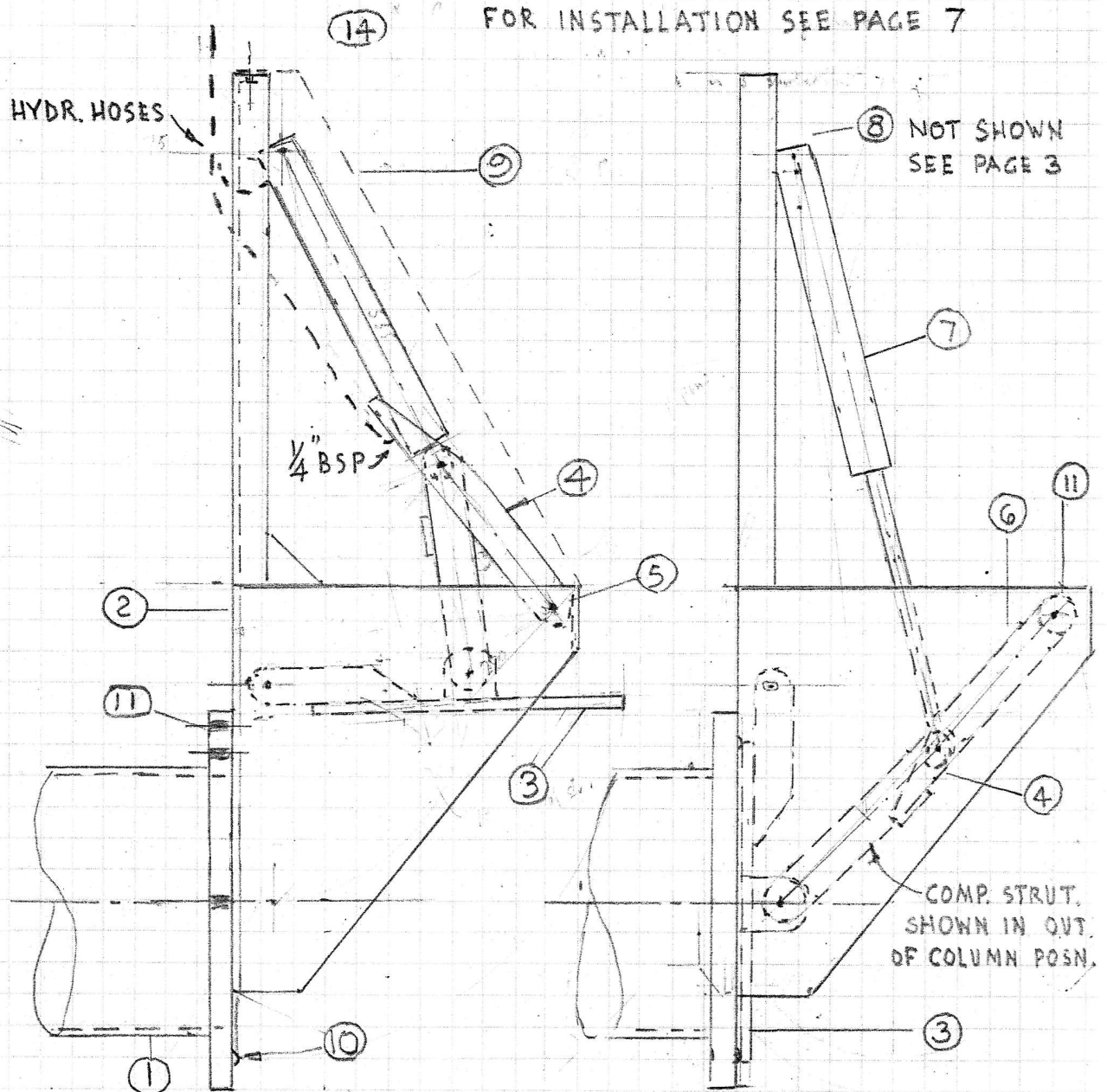
JOB No.

DESIGNED.

DATE.

CHECKED.

FOR INSTALLATION SEE PAGE 7



PARTS

Nº	NAME	Nº REQ.	PAGE NO
	GENERAL ARRANGEMENT	1	1
1	FLANGED SLUICE PIPE	1	2
2	MOUNTING FRAME	1	3
3	SLUICE PLATE	1	4
4	COMPRESSION STRUT ASSY.	1	5
5	STRUT PIVOT SCREWS	2	5
6	ADJUSTERS	2	5
7	HYDRAULIC CYLINDER ^S	1	
8	CYL. MOUNT		4
9	COVER	1	6
10	RUBBER SEALING RING 440 I.D. x 24 DIA	1 REQ.	
11	SPACERS 30 OD x 16 x 6	2	

BOLTS

Nº	SIZE	Nº REQ
11	M12x60 GALV. 6	
12	M20x50	2
13	M16x65	1
14	M12x25 (ST.ST SCREW)	1

1:10

12x

JOB NAME. SLUICE GATE

PAGE No.

SECTION.

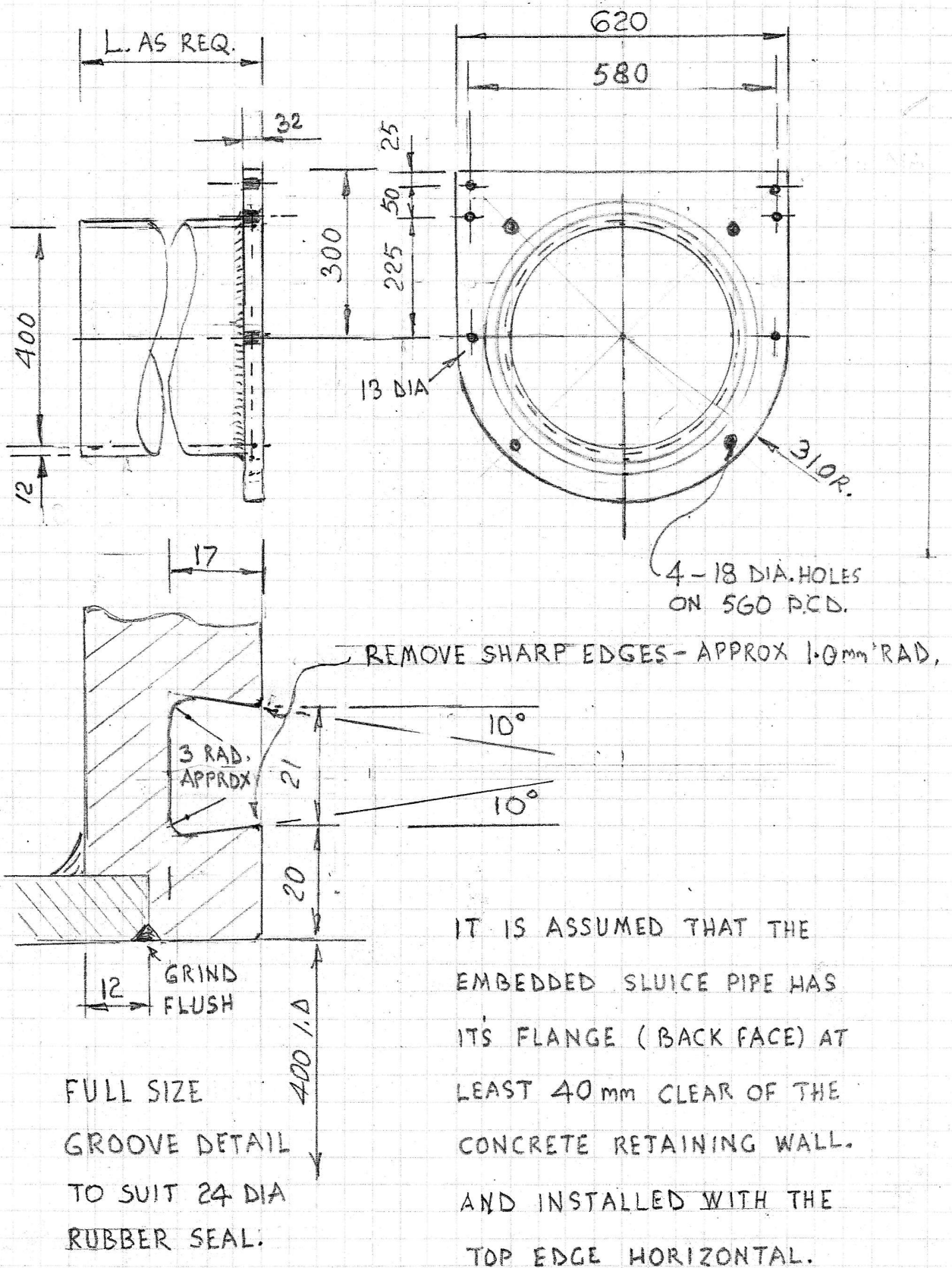
2 OF 7

JOB No.

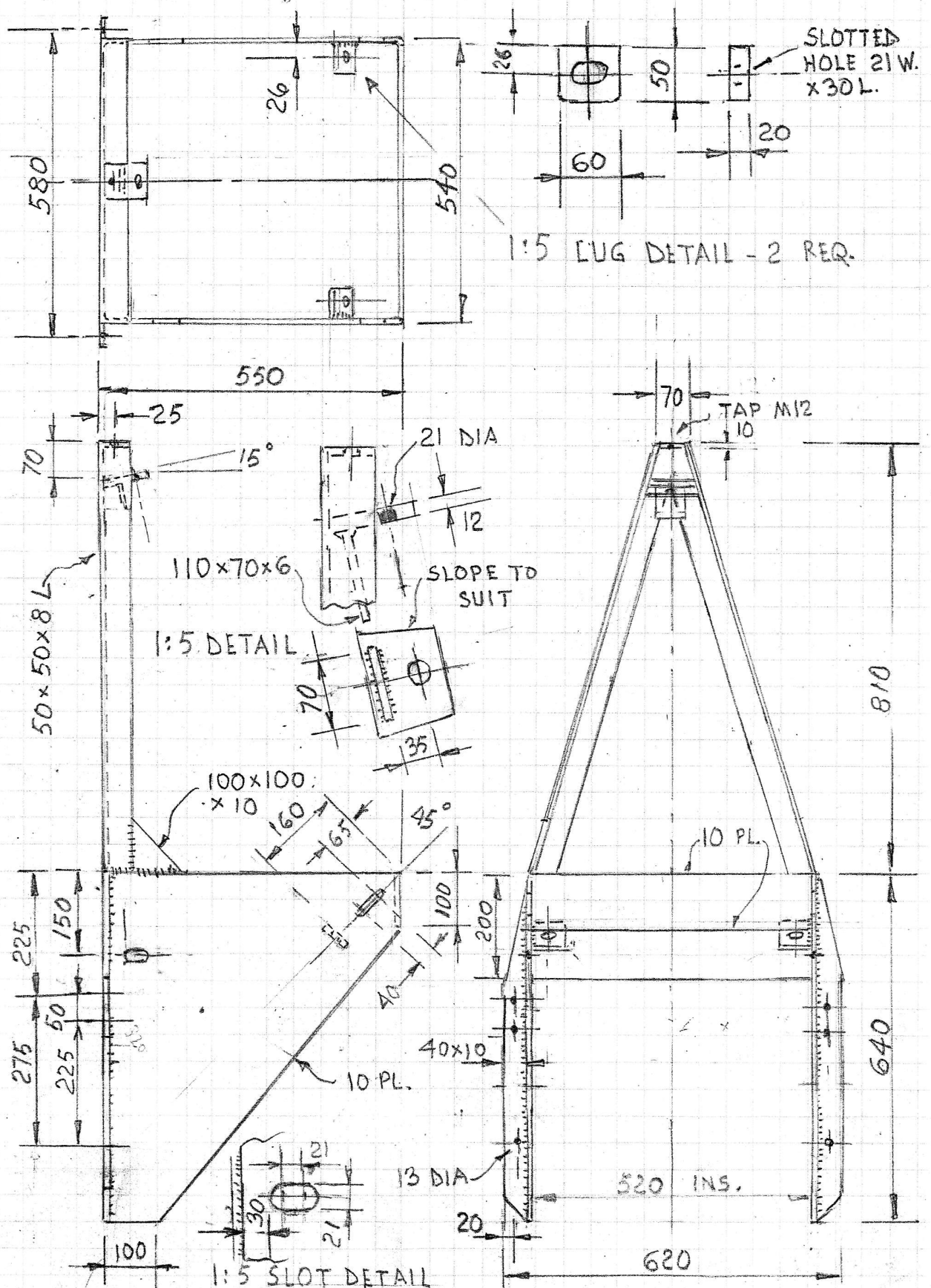
DESIGNED.

DATE.

CHECKED.

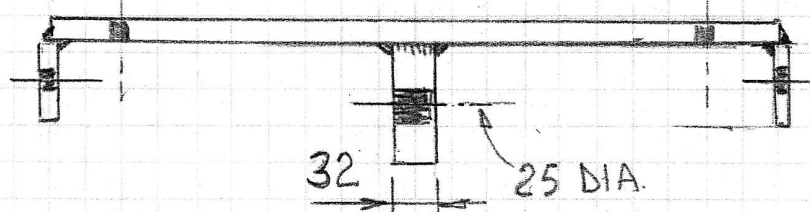
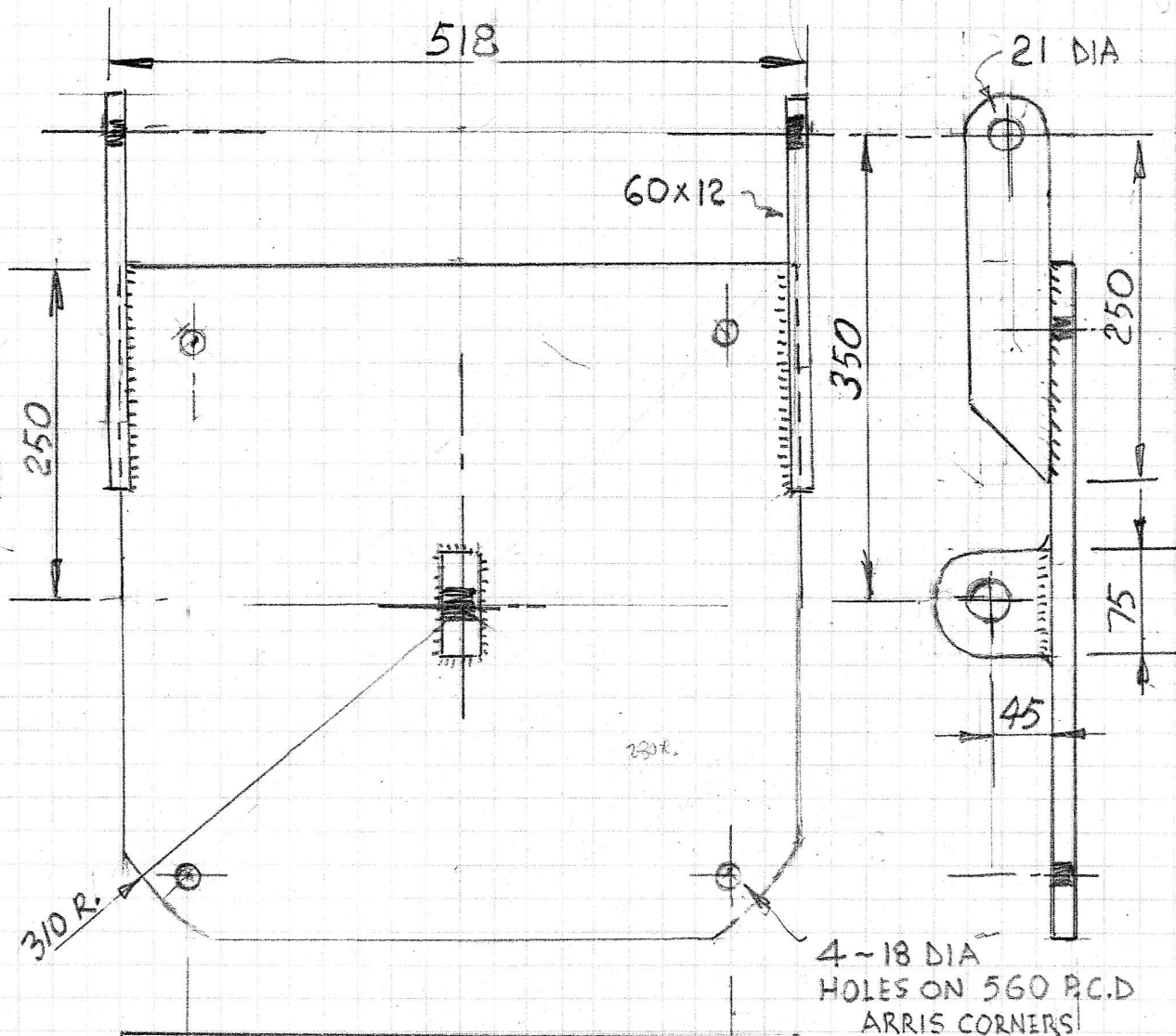
① FLANGED SLUICE PIPE

1:10

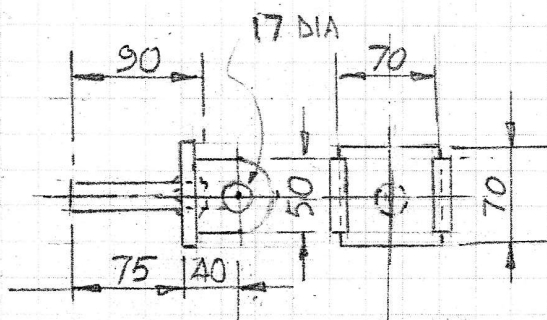


② FLAP AND CYLINDER MOUNTING FRAME 1:10

JOB NAME. SLUICE GATE		PAGE No.
SECTION.		4 OF 7
JOB No.	DESIGNED.	
DATE.	CHECKED.	



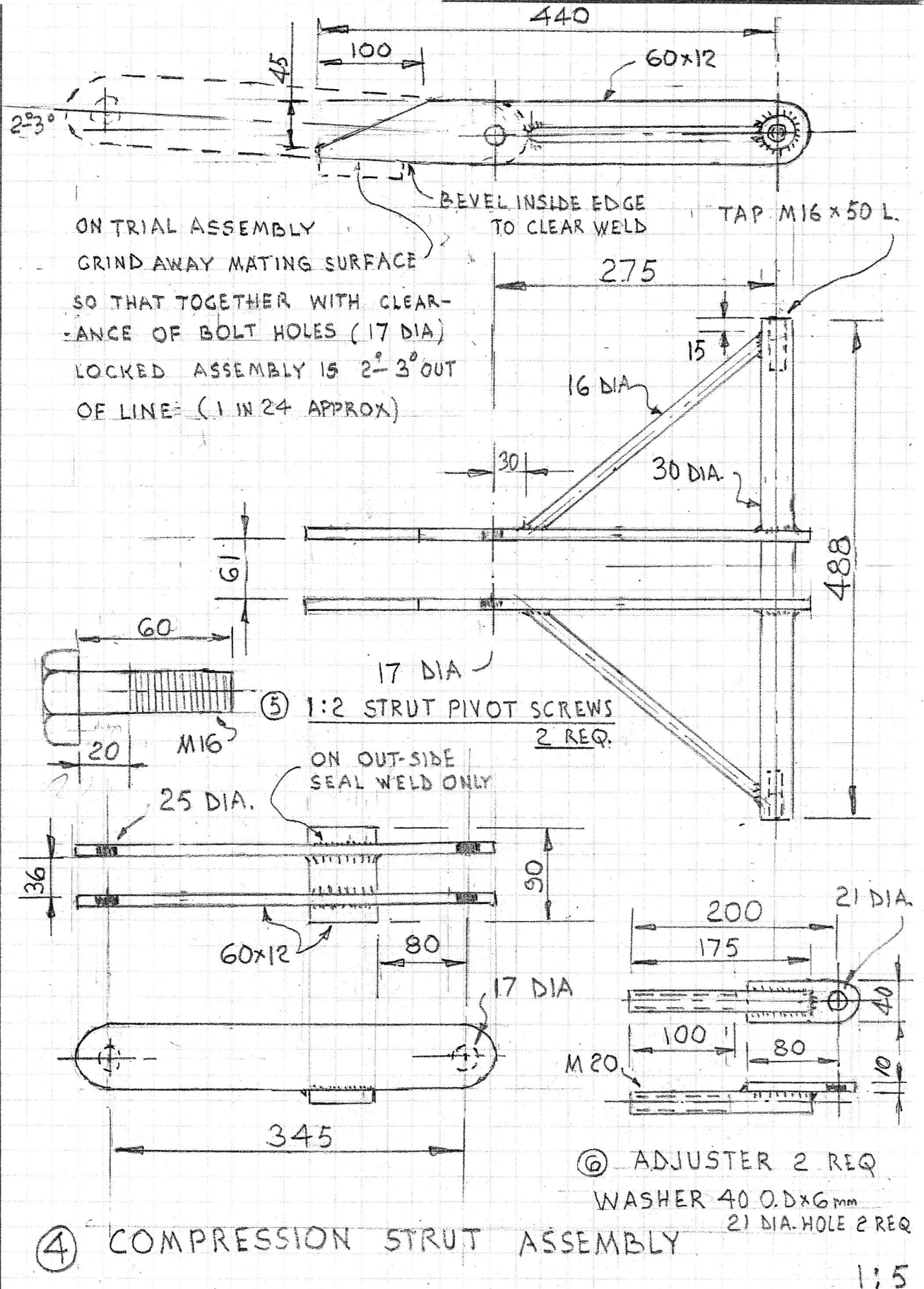
③ SLUICE PLATE



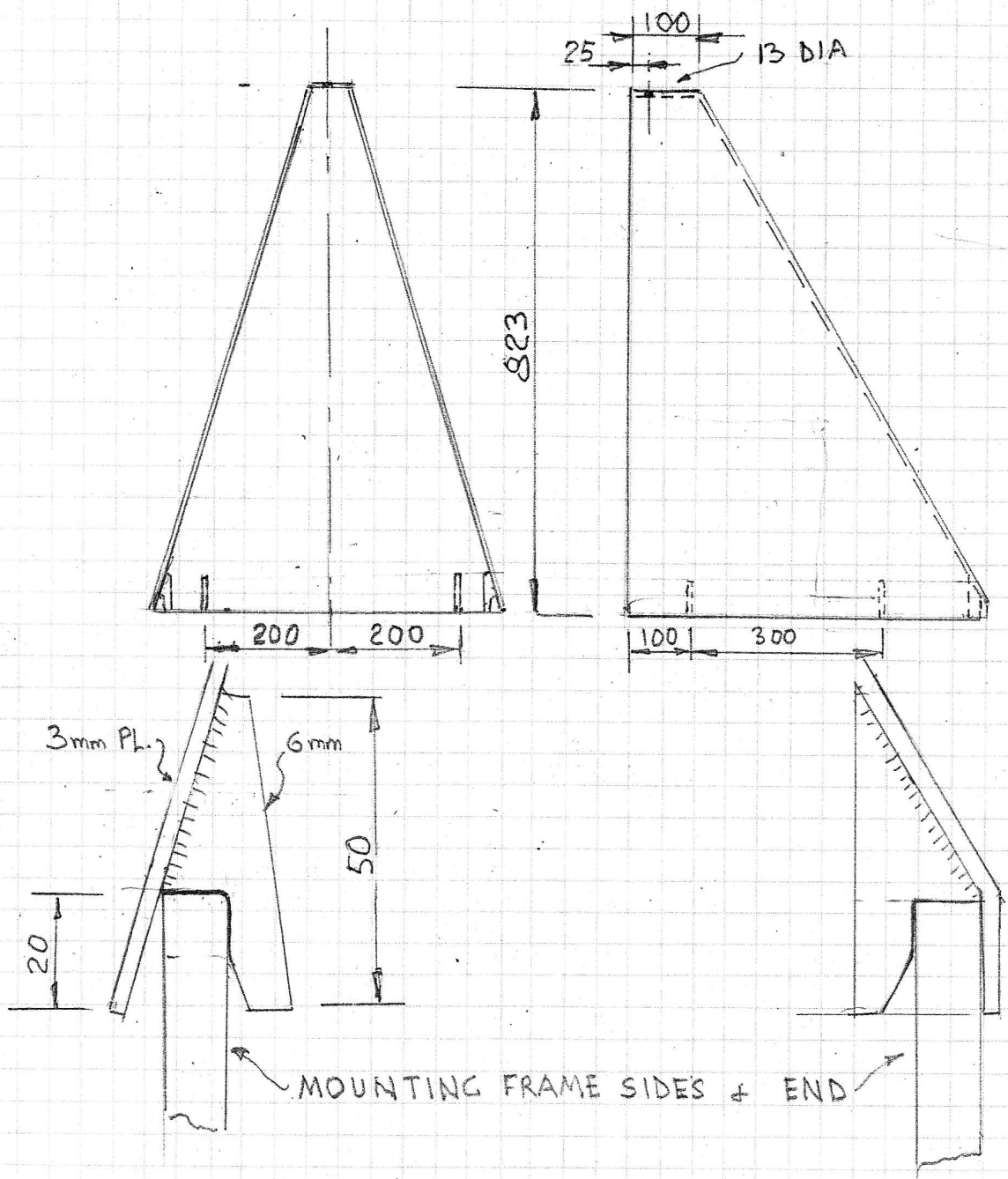
⑧ CYLINDER MOUNT 1 REQ.

FS. DETAIL

1:5



JOB NAME. SLUICE GATE		PAGE No.
SECTION.		6 OF 7
JOB No.	DESIGNED.	
DATE.	CHECKED.	



⑧ COVER

1:10

JOB NAME. SLUICE GATE		PAGE No.
SECTION. INSTALLATION		7 of 7
JOB No.	DESIGNED.	
DATE.	CHECKED.	

INSTALLATION (SEE P1)

1. THE MOUNTING FRAME WITH HYDR. CYL. AND SLUICE PLATE (SHOP ASSEMBLED) IS BOLTED TO THE FACE OF THE FLANGED SLUICE PIPE - 6 M12 BOLTS. BEFORE DOING SO ADJUST THE TWO ADJUSTER BOLTS SO THAT THE SLUICE PLATE IS TILTED OUT A LITTLE TO ALLOW THE FRAME NO HINDRANCE WHEN BOLTING UP.
2. NEXT STEP IS TO RE-ADJUST THE ADJUSTER BOLTS SO THAT THE SLUICE PLATE IS PRESSED HARD AGAINST THE SEAL
3. THE CYLINDER MOUNT CAN NOW BE LOCKED UP - CHECK THAT CYL. IS AT FULL STROKE - THIS IS IMPORTANT AS THE COMPRESSION STRUT IN ITS OUT OF COLUMN POSITION IS HELD, BUT NOT LOADED BY THE CYL.
4. FURTHER TIGHTENING OF THE ADJUSTER BOLTS (TO IMPROVE SLUICE PL. SEAL) WILL ALSO REQUIRE ADJUSTMENT TO THE CYL. MOUNT. WITH THE CYL. AT FULL STROKE SLACKENING AND THEN RE-TIGHTENING THE TWO NUTS WILL ACHIEVE OUTCOME AS EXPLAINED IN (3) ABOVE.
5. IF THE CYLINDER AFTER A PERIOD OF SERVICE NEEDS TO COME OUT FOR REPLACEMENT OR SERVICING THE SLUICE PLATE CAN BE BOLTED IN POSN. USING 4 - M16 x 90 BOLTS. THE CYL. CAN THEN ^{BE} DETACHED FROM THE COMPRESSION STRUT ASSY.